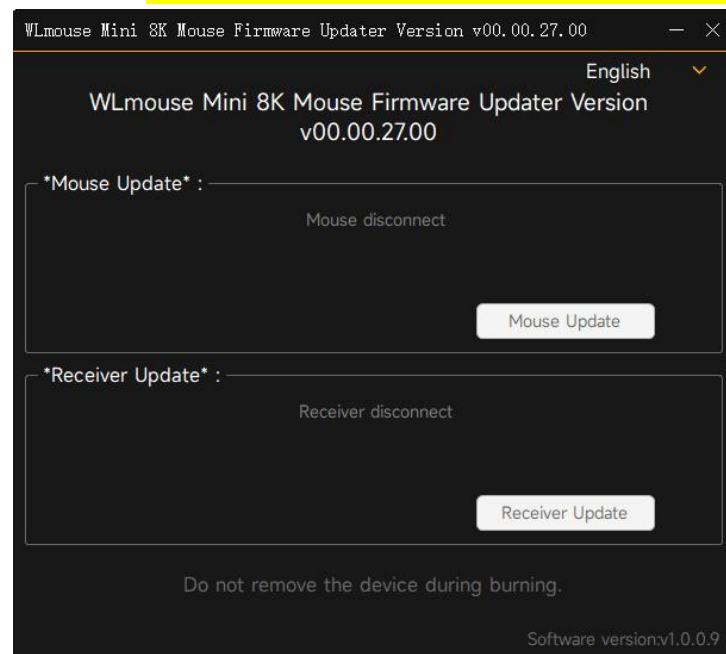
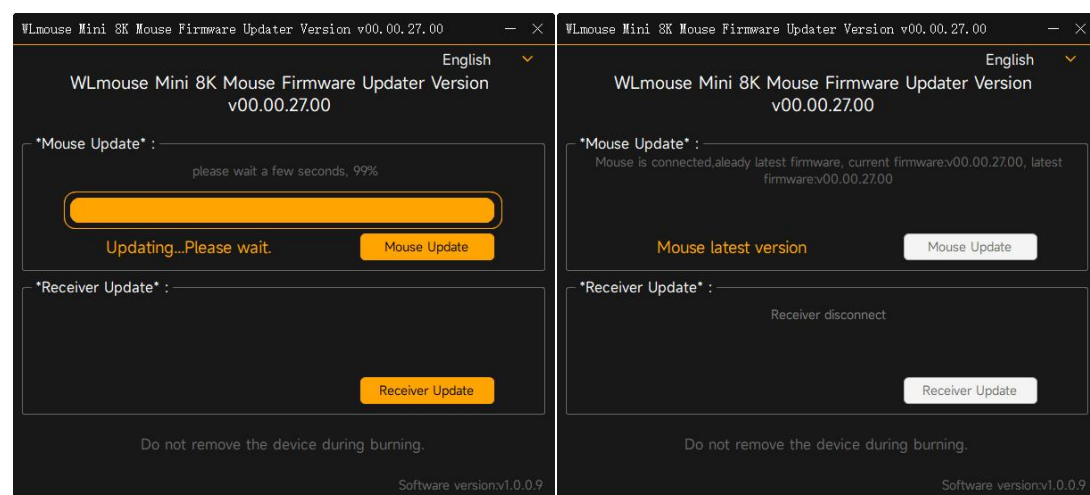


Temporarily deactivate windows firewall and any antivirus software.

1、open "[WLmouse Mini 8K Mouse v00.00.27.00 20240318 22\\_15\\_52](#)"

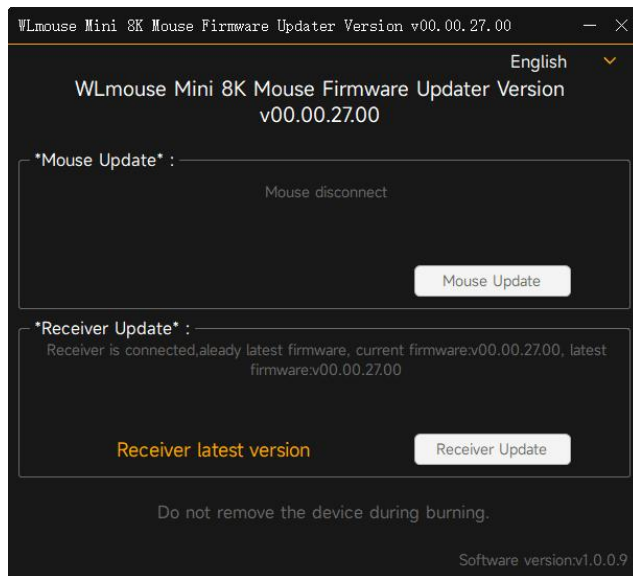


Disconnect the dongle from your computer. Connect the mouse to your computer using the provided cable, switching it to wired mode. Click the "**Mouse Update**" button, located at the top of the screen to initiate the upgrade process. Once the upgrade is finished, a message stating "Mouse latest version" will be displayed.

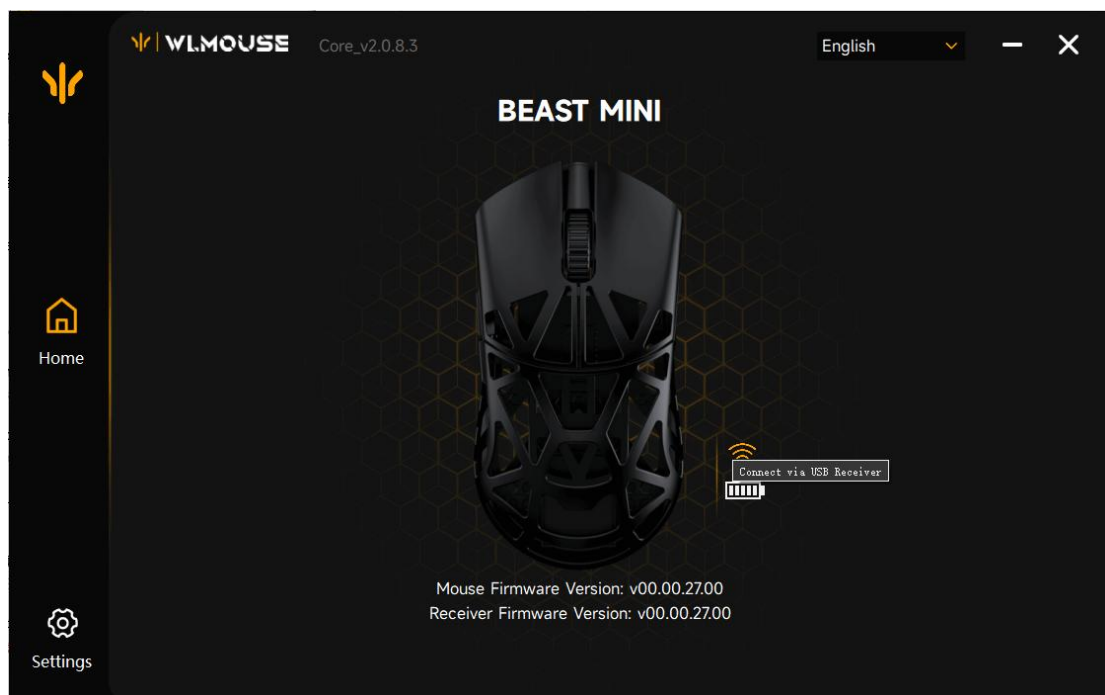


Connect the dongle to your computer using the provided cable. Toggle the switch located at the bottom of the mouse to the "o" position to activate wireless mode.

Click the "**Receiver Update**" button, Once the upgrade is complete, a message reading "Receiver latest version" will be displayed.



Open ["BEAST MINI 20240317 14 21 29 Ver2.0.8.3"](#) to install the driver. Click through and install



#### NOTE:

After the update is completed, if you encounter issues with using wireless mode, please use the following method to resolve it.

Unplug the mouse from the computer. Switch the mouse back into wireless mode to start the process of pairing. Hold the left and right mouse button, along with the front side button for 3 seconds. Once the green LED on the mouse starts flashing faster than normal, connect the 4k dongle to the computer with the included cable. When the LED on the mouse turns off, pairing has been completed.